



Republic of the Philippines
Province of Isabela
ECHAGUE DISTRICT HOSPITAL
Ipil, Echague, Isabela
**ACCOMPLISHMENT REPORT
FOR CY 2023**

The Echague District Hospital is a 25-bed general hospital which is continuously experiencing tremendous influx of patients with a bed occupancy rate of 139.62% in 2023. This indicates the need to upsize the hospital from 25 beds to 50 beds.

General Information

- * Level I General Hospital
- * Owned by the Provincial Government of Isabela
- * Authorized bed capacity - 25
- * Implementing beds - 35
- * Bed Occupancy rate - 139.62%

Hospital Operations

Total Admission excluding Newborn	2,242
Newborn	122
Total Discharges	1,424
Total In-patient Death	26
Average Daily Census	35
Referrals – From RHU	16
From other hospital/centers	26
To other health facilities	111
Admissions: Non Philhealth	
Pay	372
Service	
Philhealth	1,937
Beds Occupancy Rate	193.62%
Average Length of stay	3.41
Net Death Rate	0.65%
Recovery Rate	88.66%
Total Surgical Operations	
Cesarean Section	61

Other Major operations	
Minor (In-patients)	22
Minor (Out-patients)	448
Major (In-patients)	40
Total Outpatient Attended	12,275
Total Laboratory Test Performed	101,926
URINALYSIS	7,197
FECALYSIS	461
FOBT	9
HEMATOLOGY	66,301
CLINICAL CHEMISTRY	24,500
HBSAG SCREENING	266
VDRL/ SYPHILIS	56
SALMONELLA TYPHI	145
DENGUE IgG IgM	122
DENGUE NSI	154
HCG/ PREGNANCY TEST	775
T3	40
T4	35
TSH	115
FT4	82
FT3	26
CKMB	9
PSA	20
CTN1	57
SARS-COV2 (RAPID)	1205
SARS-COV2 (RTPCR)	48
BLOOD TRANSFUSED	221
NEW BORN SCREENING	71
Total Prescriptions	52,863
Filled	99.62%
Unfilled	0.38%
Total X-rays performed	2,350
Total referrals	153
Referrals Sent	111
Referrals Received	42
ABTC (Dog bite cases)	7,124
Dental Services	
No. of Patients who had tooth Extraction	409
No. of Person Attended/ Examined	1,201
No. of Patients given Oral Prophylaxis	37
No. of Patients Referred	115

Services Offered

In-patient and Out Patient Services

Medicine

Pediatrics

Ob-Gynecology

Surgery

Orthopedics

Laboratory Services

Emergency Room Services

Animal Bite Treatment Center

Dental Services

Radiology

Pharmacy

Reproductive and Family Planning

Administrative and Support Services

Ambulance

Blood Station

New Born Screening

Human Resources

The Echague District Hospital is a Level I general hospital and is owned and operated by the Provincial Government of Isabela under the leadership of Governor Rodolfo T. Albano III with the following staff composition:

Medical Services:

Doctors - 6

- 1 - Chief of Hospital II
- 5 - Medical Officer III
- 2 - Contractual Medical Officer

Visiting Consultants

- 1 – Anesthesiologist
- 1 – Anesthesiologist (DOH)
- 2 - General Surgeon
- 1 – Internist (DOH)
- 1 – Pediatrician (DOH)
- 2- OB-Gyne (DOH)
- 1 - Orthopaedic Surgeons

Dental Services

- 1 - Dentist II

Ancillary Services

- 1 - Medical Technologist II
- 2-Medical Technologist I
- 4 –Medical Technologist- Contractual

Pharmacy Services

- 1-Pharmacist I
- 5- Pharmacist
- 5 - Contractual Pharmacist

Nursing Services

- 1 - Chief Nurse
- 1- Nurse II
- 20 - Nurse I - Permanent
- 1 – Midwife II - Permanent
- 6 -Nurse - Contractual
- 1 – Nursing Attendant II - Permanent
- 4 - Nursing Attendant I – Permanent
- 1 - Midwife (RSI detailed from GFNDY)

Administrative Services:

- 1 –Administrative Officer V
- 1 - Records Officer
- 1 - Cashier
- 1 - Social Worker
- 2 – Drivers
- 1 - Storekeeper
- 3 - Admin Aide III
- 4 - Admin Aide III - Contractual
- 1 - Admin Aide II –Building Maintenance
- 8 - Utility Workers - Contractual
- 3- Utility Workers
- 6 –Provincial Security Group
- 1- Administrative Aide I

Dietary Services

- 1 - Nutritionist Dietician II
- 1 - Cook
- 2 - Food Service Worker

Laundry Services

- 1-Admin Aide I
- 1- Admin Aide I - Contractual

In December 2023, twenty one (21) employees were appointed to permanent plantilla positions, and once (1) was promoted:

- 1 - Administrative Officer V
- 12 – Nurse I
- 1 – Nutritionist Dietician II
- 1 – Storekeeper I
- 3 – Nursing Attendant I
- 1 – Administrative Aide III (Cook)
- 3 – Administrative Aide I

Mobile Blood Donation

Date	Place of Donation	Total No. of Donations
02/23/2023	San Fabian, Echague, Isabela	27
03/06/2023	Virgoneza, San Agustin, Isabela	47
03/16/2023	Municipal Evacuation, Center, San Fabian, Isabela	128
03/24/2023	Mabuhay, Echague, Isabela	23
06/14/2023	Mapalad, San Agustin, Isabela	46
07/14/2023	Municipal Evacuation, Center, San Fabian, Isabela	121
08/14/2023	Mabuhay, Echague, Isabela	14
08/26/2023	Camp Melchor F. Dela Cruz, Soyung, Echague, Isabela	30
09/15/2023	Garit Norte, Echague, Isabela	14
09/26/2023	Mun. Auditorium, Masaya Centro, San Agustin, Isabela	42
10/24/2023	Palacian, San Agustin, Isabela	42
10/26/2023	Municipal Evacuation, Center, San Fabian, Isabela	101
12/14/2023	Mun. Auditorium, Masaya Centro, San Agustin, Isabela	51
	TOTAL	686

Mobile Blood Donation



Hospital Statistics

Causes of Mortality	
1. Cardio Pulmonary arrest secondary to acute abdomen probably ruptured viscous	1
2. Cardio Pulmonary arrest secondary to acute Renal Failure, Electrolyte Imbalance	1
3. Respiratory Failure secondary to CVA	1
4. Severe Hypoxia secondary to PNA, PTB	1
5. CVA Infract with bleeding, HCVD	1
6. Anaemia, severe, CAP, PTB. DM Type II	1
7. Anaemia, acute Bronchitis	1
8. BAIAE, severe acute	1
9. CVA, Bleeding	1
10. Anemia, severe, chronic Kidney Disease DM type II	1
11. Anaemia, severe, Leukaemia	1
12. Pneumonia, acute Renal Failure secondary to aspiration Pneumonia	1
13. Cardio Respiratory Arrest secondary to anaemia, BPUD	1
14. Acute respiratory failure due to Pneumonia Immunocompromised due to Breast Cancer Stage IV with Bone Metastasis	1
15. Acute Coronary Syndrome, HCVD	1
16. Uremic Encephalopathy secondary to Chronic Kidney Disease	1
17. Ischemic Heart Disease Myocardia Infraction	1
18. Pleural Effusion secondary to Pneumonia Process, CVD Infract frontal area	1
19. Cardiopulmonary arrest secondary to Pulmonary Hypoplasia, Oligohydramnios	1
20. Cardiopulmonary arrest secondary to Acute Respiratory Failure secondary to PTB, Hypokalaemia Shock secondary to AGE, severe	1
21. Cardiopulmonary Arrest secondary to Acute Respiratory Failure secondary to CAP, BAIAE	1
22. Cerebrovascular Accident, prob bleeding	1
23. Acute Respiratory Failure secondary to Pediatric Community Acquired Pneumonia severe Chronic heart Disease, Pulmonary Arterial Hypertension ventricular septal defect	1
24. CVD Haemorrhage, Electrolyte Imbalance, Hypokalaemia, Brain Herniation Syndrome.	1

Discharges

1. Pneumonia	704
2. Acute Gastroenteritis	305
3. Urinary Tract Infection	282
4. Acute Gastritis	225
5. Hypertension	197
6. Acute upper respiratory infections	174
7. Dengue Fever	120
8. Diabetes Mellitus	118
9. Pulmonary Tuberculosis	115
10. Influenza	98

Pneumonia is the leading cause of discharges, with 704 cases followed by Acute Gastroenteritis.

10 Leading Causes of Consultations in the OPD

1. Urinary Tract Infection	1,403
2. Upper Respiratory Infections / Acute Upper Respiratory Infections	1,399
3. Essentially Normal	1,150
4. Hypertension	893
5. Musculoskeletal disorder	711
6. Community-acquired pneumonia	681
7. Acute Gastritis	616
8. Diabetes Mellitus	439
9. Bronchitis	426
10. Vertigo	418

The data represents the 10 leading causes of consultations in the Outpatient Department (OPD) UTI ranks as the most common reason for outpatient consultations, with 1,403 cases followed by Upper Respiratory System with 1,399 cases

Total Number of Deliveries

1. Total Number of in-facility deliveries	166
2. Total of live-birth vaginal deliveries(normal)	105
3. Total live-birth Caesarean Section	61

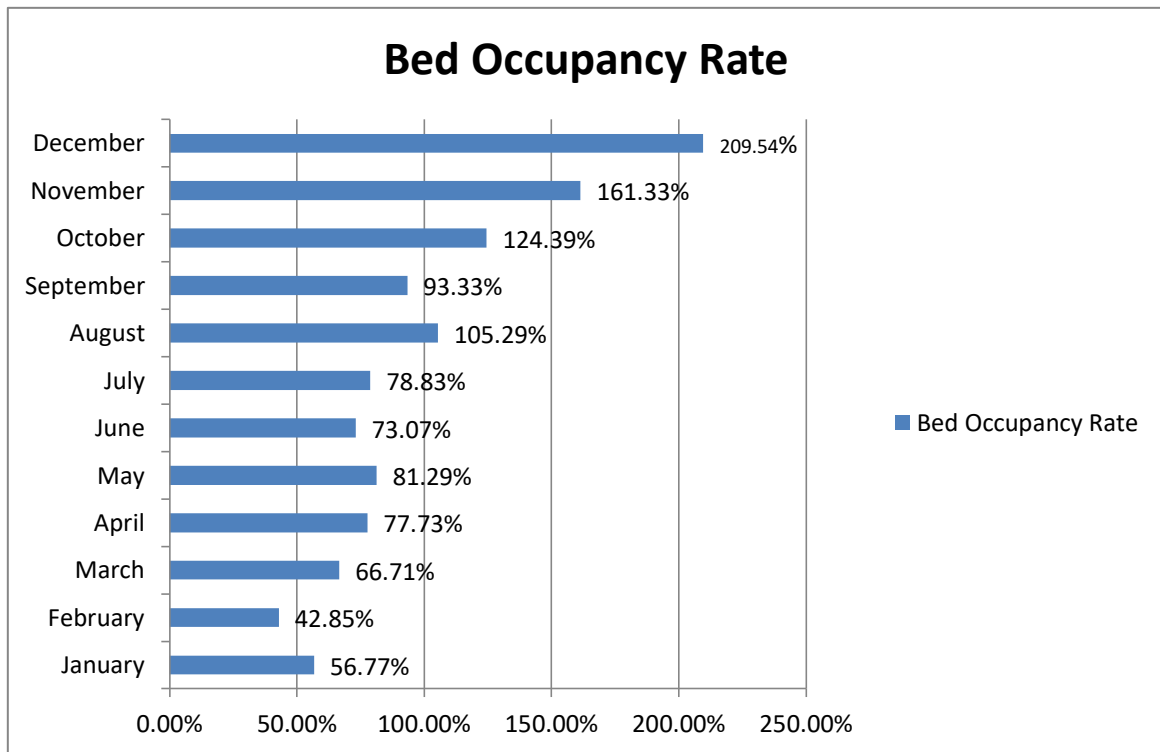
Emergency Visits

1. Total Number of emergency department visits	3,517
2. Total Number of emergency department visits -adult	2,485
3. Total Number of emergency department visits -paediatric	1,032

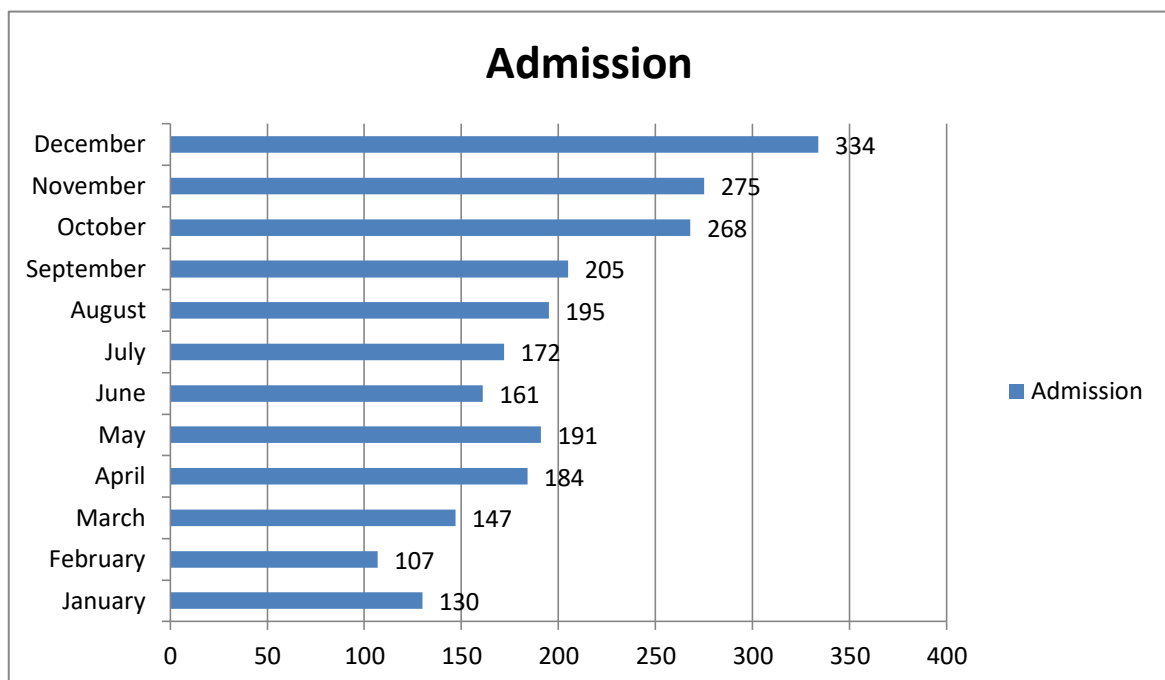
10 Leading Causes of Consultations in the Emergency Room

1 Open wound	8,445
2 Superficial wound	1,341
3 Vehicular accident	511
4 Cellulitis	311
5 Positive alcoholic breath	308
6 Fracture	246
7 Mauling Incident	171
8 Hypersensitivity Reactions	127
9 Fall	87
10 Avulsion	68

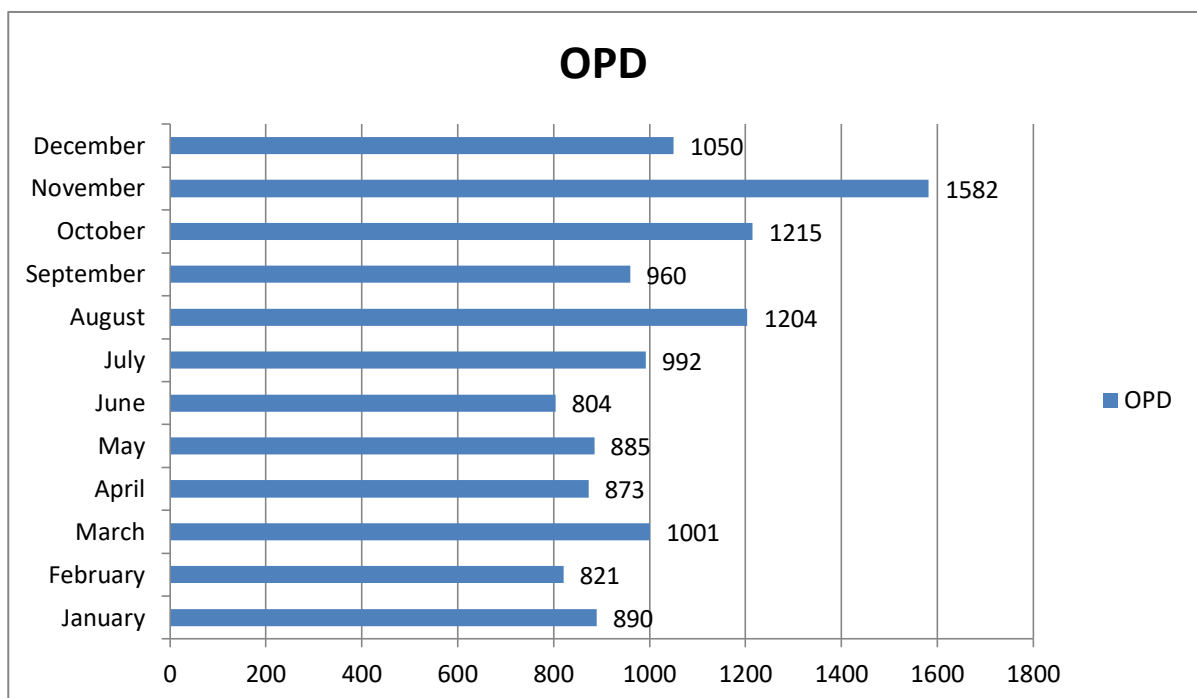
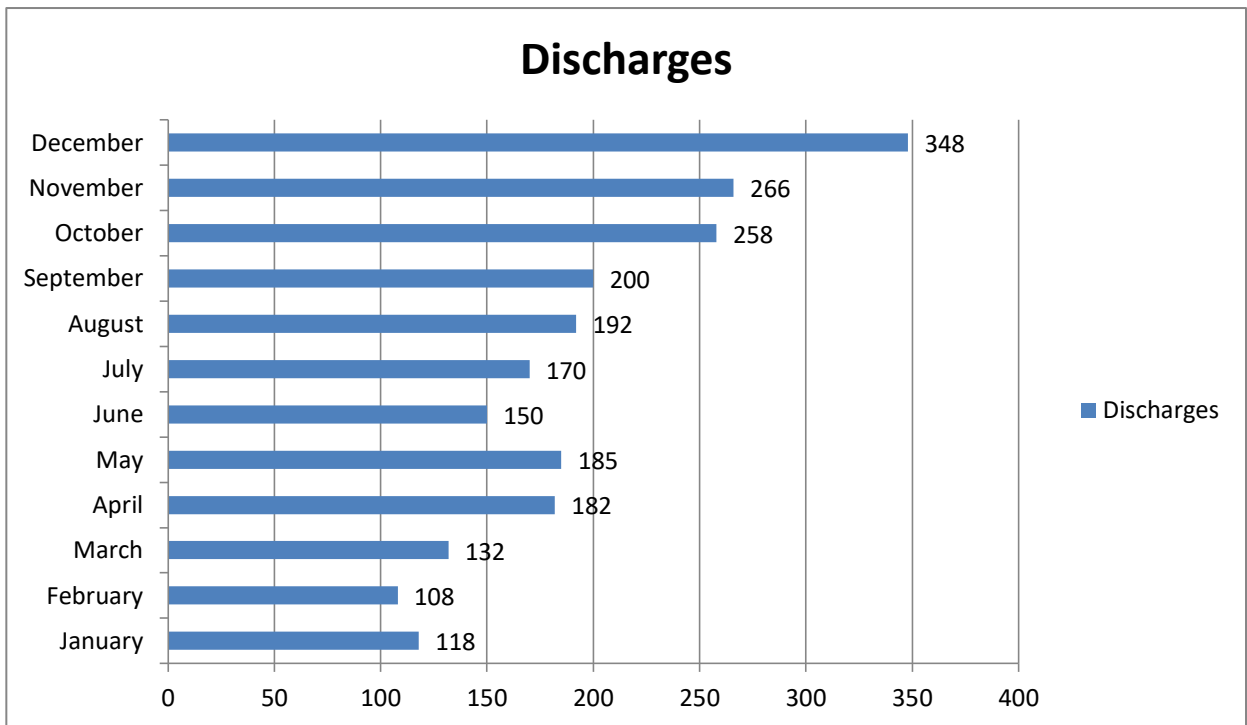
The data provides insight into the prevalence of various health conditions and incidents, with open wounds being the most frequently reported, followed by superficial wounds, vehicular accidents, and so on.



The bed occupancy rates show a fluctuating pattern throughout the year, with a general increasing trend from January to December.



There is a noticeable peak in admissions during the later months of the year, particularly in October, November, and December. This could be indicative of increased health-related issues during the colder months.



Similar to the admissions data, the outpatient data shows a general increasing trend from January to December, with some fluctuations along the way. November sees a further increase, reaching 1582 outpatients, marking the highest number of OPD patients. In summary, the outpatient data indicates dynamic patterns throughout the year, reflecting seasonal variations and other factors that impact the demand for outpatient services.

INFRASTRUCTURE



Before



After

RENOVATION OF COMFORT ROOMS



Before



After

CONSTRUCTION OF DIALYSIS CENTER

Policy Standards and Regulations

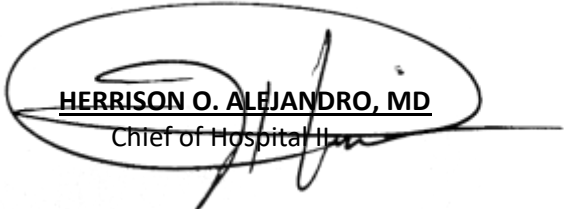
- The Echague District Hospital is a DOH Licensed Level 1 Health facility with an authorized capacity of 25 beds
- It is a registered member of the Philippine Hospital Association
- It is an Animal Bite Treatment Center accredited facility
- It is PHIC accredited
- It is Licensed to Operate a General Clinical Laboratory
- It is Authorized to Operate a Blood Station
- It is NEQAS certified
- It is Licensed to Operate a Pharmacy
- It is Licensed to Handle Dangerous Drugs

Hospital Income

Distribution					
2023	Certification, Medical Certificates, Medico-Legal	Laboratory, X-ray, Dental, Medical	Hospital Fees: Room & Board, OR/DR Fee, Misc.	Sales Revenue: Medicines, Supplies, NBS	Total
T O T A L	163,920.00	3,130,748.00	75,627.00	5,563,676.00	8,933,971.00

PHIC COLLECTION

Pay to Hospital Bills – 12,166,031.03



HERRISON O. ALEJANDRO, MD
 Chief of Hospital